

**CONTINUOUS ASSESSMENT 2 TERM 1 2026**  
**S.1 BIOLOGY**  
**45 Minutes**

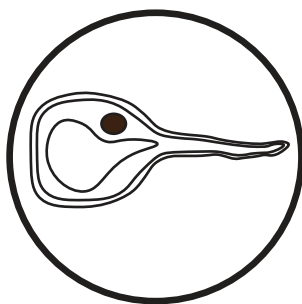
**Instructions:**

- Respond to all items.
- Write your responses in the spaces provided.

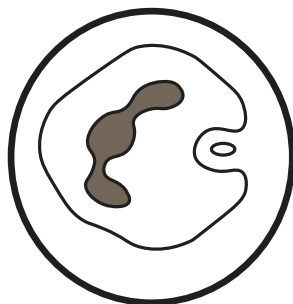
**Item 1**

S.1K students of Kisozi High School were provided with prepared microscope slides during a practical lesson. When observed under the microscopes, the following images were seen:

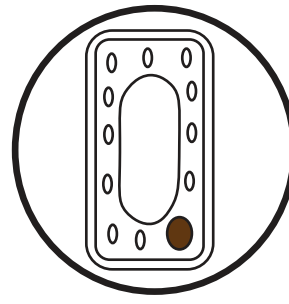
Slide 1



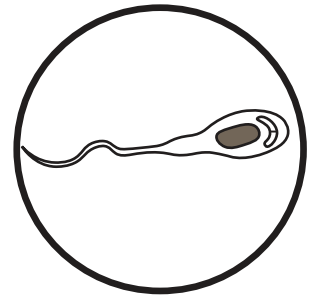
Slide 2



Slide 3



Slide 4



Although the students could describe the visible structures on each slide, some became confused about their identity, differences, and biological significance.

**Task**

- (a) Identify the structure shown on each slide and state whether it belongs to a plant or an animal.

---

---

---

---

---

---

---

---

---

---

- (b) State the differences between the structure on slide 2 and structure on slide 3.

---

---

---

---

---

---

---

---

---

---

(c) (i). State the special function of the structure on:

Slide 1

---

---

Slide 2

---

---

Slide 3

---

---

Slide 4

---

---

(ii) Explain how the structure on each slide is adapted to perform the stated function in (c) (i).

Slide 1

---

---

Slide 2

---

---

Slide 3

---

---

Slide 4

---

---

**END**