

### CLASSWORK 1

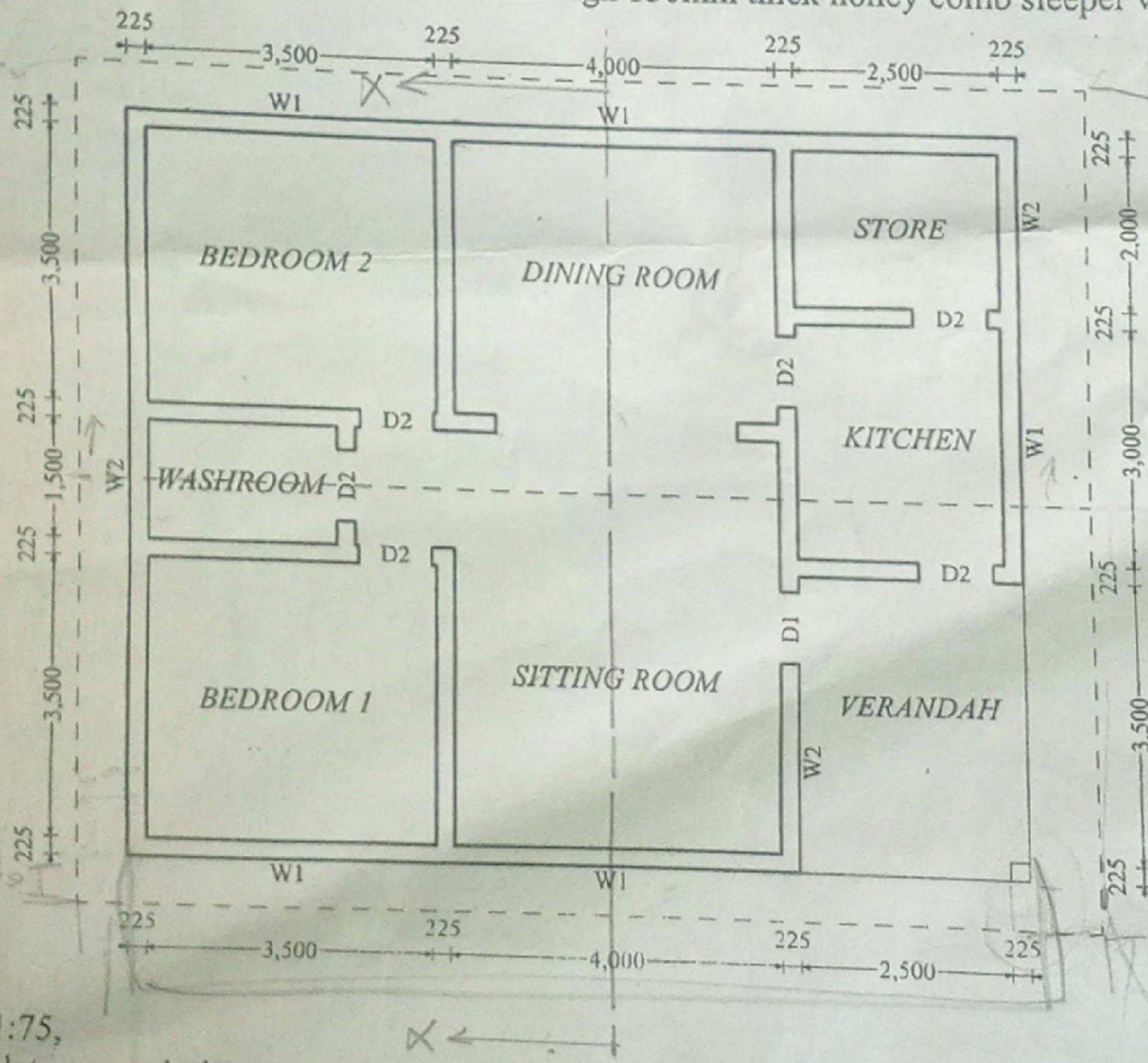
You've been contracted by a client to design a two bedroom self-contained residential house but you've been provided with the specifications and a sketch plan below not drawn to scale. Utilise them to attempt the tasks below.

#### SPECIFICATIONS

**DOORS:-** D1- 1500mm wide x 2100mm high side hung double leaf casement metallic doors.  
D2- 900mm wide x 2100mm high side hung single leaf two panelled doors.

**WINDOWS:-** W1- 1200mm wide x 1200mm high casement metallic window.  
W2- 600mm wide x 600mm high top hung metallic casement window.

**FLOORS:-** 12mm thick ceramic tiled floor 200mm thick solid slab on, 250mm thick hardcore on, 300mm thick well compacted murrum, 500mm wide x 150mm thick splash aprone. Suspended timber floors with 25mm thick T&G boards on, 150mm x 50mm floor joist on, 100mm x 75mm wallplates on, 450mm high 150mm thick honey comb sleeper walls.



#### QUESTIONS

1. To a scale of 1:75,
  - i) Draw a complete ground plan and on it indicate all the necessary fittings and symbols. (27 marks)
2. To a scale of 1:10, Draw a well labelled isometric section through a
  - i) Solid ground slab floor. (10 marks)
  - ii) Suspended timber ground floor. (10 marks)
3. At the bottom right hand corner of your drawing paper, draw a title block and on it, print your name, index number, title of drawing, scale, examination paper code, and date. (03 marks)

END